



### NEW REVELATIONS ON THE ROSWELL UFO CRASH

*(The following letter was received by American radio show host Art Bell on 18th April 1996. Included with this letter were various pieces of metals and electronic-style components. Art Bell organised for the materials to be photographed, and put their pictures and the accompanying letter onto the World Wide Web of the Internet. Ed.)*

April 10th, 1996  
Art Bell  
PO Box 4755  
Pahrump, Nevada 89041-4755

Dear Mr Bell,

I've followed your broadcasts over the last year or so, and have been considering whether or not to share with you and your listeners some information related to the Roswell UFO crash.

My grandfather was a member of the retrieval team sent to the crash site just after the incident was reported. He died in 1974, but not before he had sat down with some of us and talked about the incident.

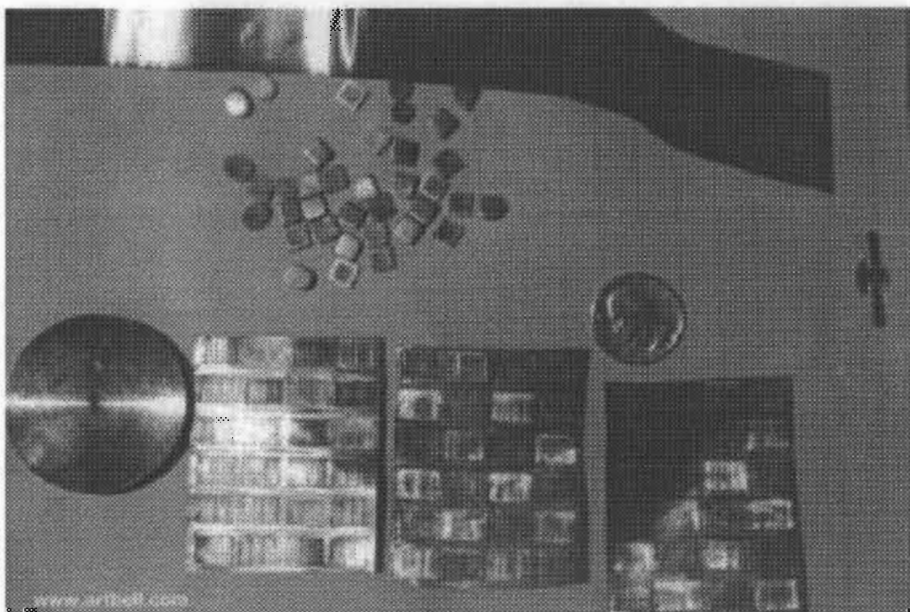
I am currently serving in the military and hold a security clearance, and do *not* wish to 'go public' and risk losing my career and commission.

Nonetheless, I would like to tell you briefly what my own grandfather told me about Roswell. In fact, I enclose for your safekeeping 'samples' that were in the possession of my grandfather until he died, and which I have had since his own estate was settled. As I understand it, they came from the UFO debris and were among a large batch subsequently sent to Wright-Patterson AFB in Ohio from New Mexico.

My grandfather was able to 'appropriate' them, and stated that the metallic samples are "pure extract aluminum". You will note that they appear old and tempered, and they have been placed in tissue-paper and in Baggies for posterity.

I have had them since 1974, and after considerable thought and reflection give them to you. Feel free to share them with any of your friends in the UFO research community.

I have listened to many people over the years discuss Roswell and the crash events as reported by many who were either there



# THE TWILIGHT ZONE

or who heard about it from eyewitnesses.

The recent Roswell movie was similar to my grandfather's own account, but a critical element was left out, and it is that element which I would like to share.

As my grandad stated, the team arrived at the crash site just after the AAF/USAF reported the ground-zero location. They found two dead occupants, hurled free of the disc.

A lone surviving occupant was found within the disc, and it was apparent its left leg was broken. There was a minimal radiation contamination, and it was quickly dispersed with a water/solvent wash, and soon the occupant was dispatched for medical assistance and isolation. The bodies were sent to the Wright-Patterson AFB for dispersal. The debris was also loaded onto three trucks which finished the onload just before the sunset.

Grandad was part of the team that went with the surviving occupant. The occupant communicated via telepathic means. It spoke perfect English, and communicated the following:

The disc was a "probe ship" dispatched from a "launch ship" that was stationed at the dimensional gateway to the Terran solar system, 32 light years from Terra. They had been conducting operations on Terra for over 100 years. Another group was exploring Mars and Io.

Each probe ship carried a crew of three. A launch ship had a crew of 100.

The disc that crashed had collided with a meteor in orbit of Terra and was attempting to compensate its flight vector, but because of the collision the inter-atmospheric propulsion system malfunctioned and the occupants sent out a distress signal to their

companions on Mars. The launch-ship commander made the decision to authorize an attempted soft-landing on the New Mexican desert. At the same time, the inter-atmospheric propulsion system had a massive electrical burn-out, and the disc was soon virtually helpless.

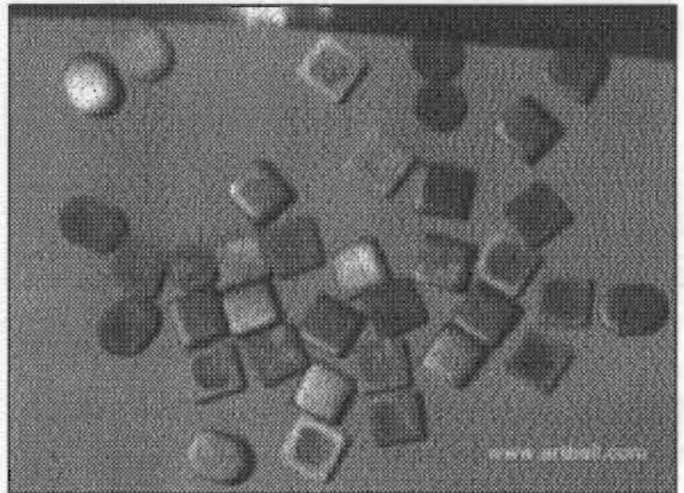
There was another option available to the occupants, but it involved activating the dimensional power-plant for deep space travel. However, it opens an energy vortex around the disc for 1,500 miles in all directions. Activating the dimensional power-plant would have resulted in the annihilation of the states of New Mexico, Arizona, California and portions of Mexico. Possibly even further states would have been affected.

Thus, the occupants chose to ride the ship down and hope for the best. They literally sacrificed their lives rather than destroy the populations within their proximity.

The dimensional power-plant was self-destructed, and the inter-atmospheric propulsion system was also deactivated to prevent the technology from falling into the hands of the Terrans. This was done in accordance with their standing orders in regards to any compromise with contact experiences.

Grandad spent a total of 26 weeks in the team that examined and debriefed the lone survivor of the Roswell crash. Grandad's affiliation with the 'project' ended when the occupant was to be transported to a long-term facility. He was placed on board a USAF transport aircraft that was to be sent to Washington, DC.

The aircraft and all aboard disappeared under mysterious and disturbing circumstances en



route to Washington, DC.

It may interest you that three fighter aircraft, dispatched to investigate a distress call from the transport, experienced many electrical-malfunctioning systems failures as they entered the airspace of the transport's last reported location. No crash or debris of the transport was ever found. The team was disbanded.

Well, I realize I have likely shocked you with this bizarre and incredible account, and seeking to remain 'unknown' likely doesn't do anything for my credibility, eh? And the metal 'samples' only will likely add to the controversy.

But, I know you will take this with a 'grain of salt', and I don't blame you, Mr Bell.

I just hope that you can understand my reasons and my own desire to maintain my career and commission.

I am passing through South Carolina with an Operational Readiness Mobility Exercise and will mail this just prior to this exercise, possibly from the Charleston area.

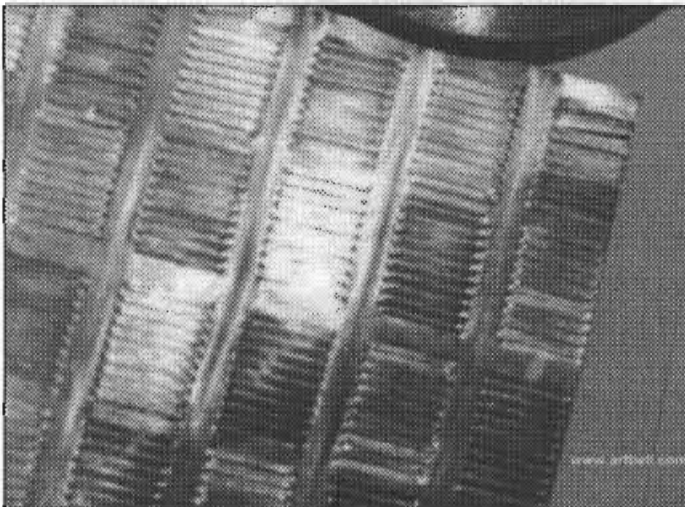
I will listen to your broadcast to receive any acknowledging or confirmation that you have received this package.

This letter and the contents of the package are given to you with the hope that it helps contribute to discussion on the subject of UFO phenomena.

I agree with Neil Armstrong, a good friend of mine, who dared to say, at the *White House* no less, that there are things "out there" which boggle the mind and are far beyond our ability to comprehend.

Sign me,  
A Friend.

(Source: Downloaded from the Art Bell web site; address: <http://www.artbell.com/art/ufos.html>)



## ROSSELLI'S MYSTERIOUS MAP OF ANTARCTICA

© 1995, George M. Hollenback

Among the enigmas explored in Graham Hancock's *Fingerprints of the Gods* is the depiction of Antarctica on maps made centuries before that continent was 'officially' discovered in 1820.

Now the appearance of a large southern land mass on pre-15th century maps is nothing extraordinary in itself. An ancient storyteller could have spun a convincing yarn about such a place, and early map-makers could have incorporated the myth into their cartography. Subsequent voyages of discovery would then apparently corroborate the myth.

For example, when Magellan first sailed through the narrow strait separating the tip of South America from the island of Tierra del Fuego, it was believed that Tierra del Fuego was a part of this large southern land mass. When early explorers first sighted New Guinea, it, too, was believed to be a part of the same land mass.

Some 16th-century maps depict a large 'supercontinent' stretching from the north shore of New Guinea, down across the South Pacific to Tierra del Fuego, across the South Atlantic and Indian Oceans, and back up to New Guinea. The boundaries of this landmass would have enclosed the entire continents of Australia and Antarctica, along with the southernmost portions of the Atlantic, Pacific and Indian oceans.

When Tierra del Fuego and New Guinea were found to be islands, the north coast of Australia then became part of the coast of this supercontinent. When it appeared that Australia was probably a separate land mass, New Zealand promptly became a part of the dwindling supercontinent.

In his voyages of 1772-1775, Captain James Cook actually circumnavigated Antarctica itself—without ever sighting land! These voyages dispelled the notion that New Zealand was part of a

southern continent and also raised doubts about the very existence of an Antarctic land mass. Some maps drawn as late as the early 19th century feature southern polar projections with Antarctica conspicuously absent. When Antarctica was finally discovered and explored, it began to reappear on these maps.

What is extraordinary about the pre-discovery maps cited by Hancock is their uncanny accuracy. Antarctica is not some sprawling, amorphous figment of a cartographer's imagination: on these maps, Antarctica does indeed look like Antarctica. The oldest map cited is the Piri Reis map of 1513—produced *three centuries* before the official discovery of Antarctica.

The upshot of all this is that some ancient, advanced civilisation must have mapped Antarctica long ago, and that Antarctica must have had a sufficiently temperate climate to facilitate such mapping. Later cartographers drew upon the remnants of this ancient, lost knowledge and incorporated it into their own maps.

According to a theory tentatively endorsed by Hancock, Antarctica at one time was situated a couple of thousand miles further north of its present location. The temperate climate allowed an advanced civilisation to flourish there. Asymmetrical accumulations of ice on the Earth's poles, coupled with the centrifugal force of the Earth's rotation, caused the entire Earth's crust to slip over the mantle

like a loose orange-peel slipping around the surface of an orange. The displaced polar ice-caps rapidly melted, causing great floods. The temperate areas that shifted into the polar regions began to freeze over. Antarctica shifted so far south that it ended up enclosed within the Antarctic Circle. The ensuing glaciation of the continent forced its inhabitants to set sail for other parts of the world, leaving behind traces of their advanced civilisation.

After reading *Fingerprints of the Gods*, I did some cartographical research of my own and made a significant discovery. There is a map even older than the Piri Reis map which also accurately depicts Antarctica. This map, shown in Figure 1, was made by Francesco Rosselli of Florence, circa 1508. It shows an oval projection of the globe with its centre located just under the horn of Africa. Located at the bottom of the map is a large, horizontally elongated land mass clearly labelled "ANTARCTICVS" (Shirley, p. 32).

The general size and shape of Rosselli's Antarctica correspond reasonably well to modern renditions of the continent. In addition, there are also specific features of Rosselli's Antarctica which correspond reasonably well to features on modern maps. To the upper right of the continent is an island that looks more like a cut-off peninsula. To the right of this is a large inlet. These features bear a very strong resemblance to the Antarctic Peninsula and the Weddell Sea.

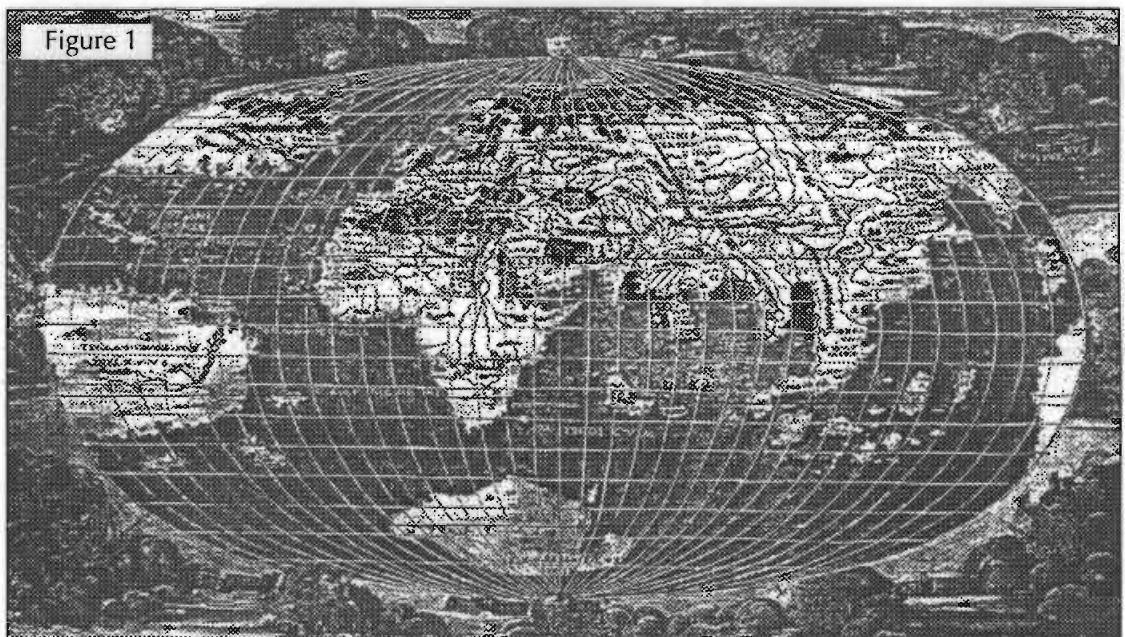
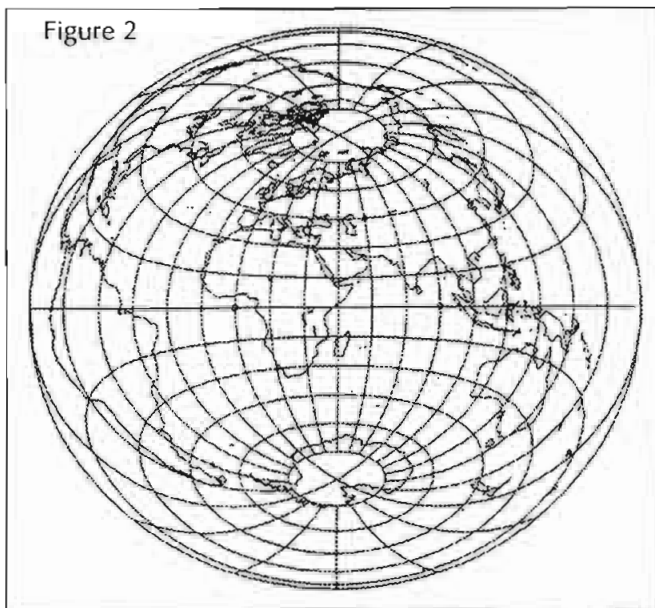


Figure 1

# THE TWILIGHT ZONE

Figure 2



South Pole to give us a better look at it. Or, as with anomaly number one, he might have been working from a source map which showed Antarctica in isolation.

Now what if, at one time, Antarctica really was a couple of thousand miles off-center from the South Pole, and a map existed showing this orientation of the isolated continent in relation to the South Pole? If a cartographer incorporated such a source into his own world map, he

modern map selected for alteration, shown in Figure 2, is a two-point equidistant projection which, like Rosselli's map, has its centre situated just under the horn of Africa (Snyder, p. 235). I redrew Antarctica within the gridwork on this map as it would appear if rotated 150 degrees to the right. This rotation orients the Antarctic Peninsula and the Weddell Sea toward the Indian Ocean. I then simply moved this projection of Antarctica closer to the tip of Southern Africa.

Figure 3 shows a side-by-side comparison of the Africa/Antarctica portion of this altered map with the Africa/Antarctica portion of Rosselli's map. Are these striking similarities mere coincidence?

### References:

- Hancock, Graham, *Fingerprints of the Gods*, Crown Publishing, New York, 1995.
- Shirley, Rodney W., *The Mapping of the World: Early Printed World Maps, 1472-1700*, New Holland, London, 1993, 3rd ed.
- Snyder, John P., *Flattening the Earth: Two Thousand Years of Map Projections*, University of Chicago Press, Chicago, 1993.

There are also a couple of anomalies on the map. First of all, if the features on Rosselli's Antarctica really are the Antarctic Peninsula and the Weddell Sea, they should be oriented toward the South Atlantic instead of the Indian Ocean.

Secondly, the continent is off-center from the South Pole, looking as if it has been pulled up closer to the southern tip of Africa.

One possible explanation for the first of these anomalies is that Rosselli might have worked from a source map which showed only Antarctica. When he incorporated this source into his own map, he got the continent turned around because there were no reference points for him to use to align Antarctica with the other continents.

As for the second anomaly, Rosselli may have simply pulled Antarctica up from the

would end up with a map showing an off-center Antarctica.

I decided to alter a modern map by rotating Antarctica and moving it closer to the southern tip of Africa, and then compare this altered map with Rosselli's map. The

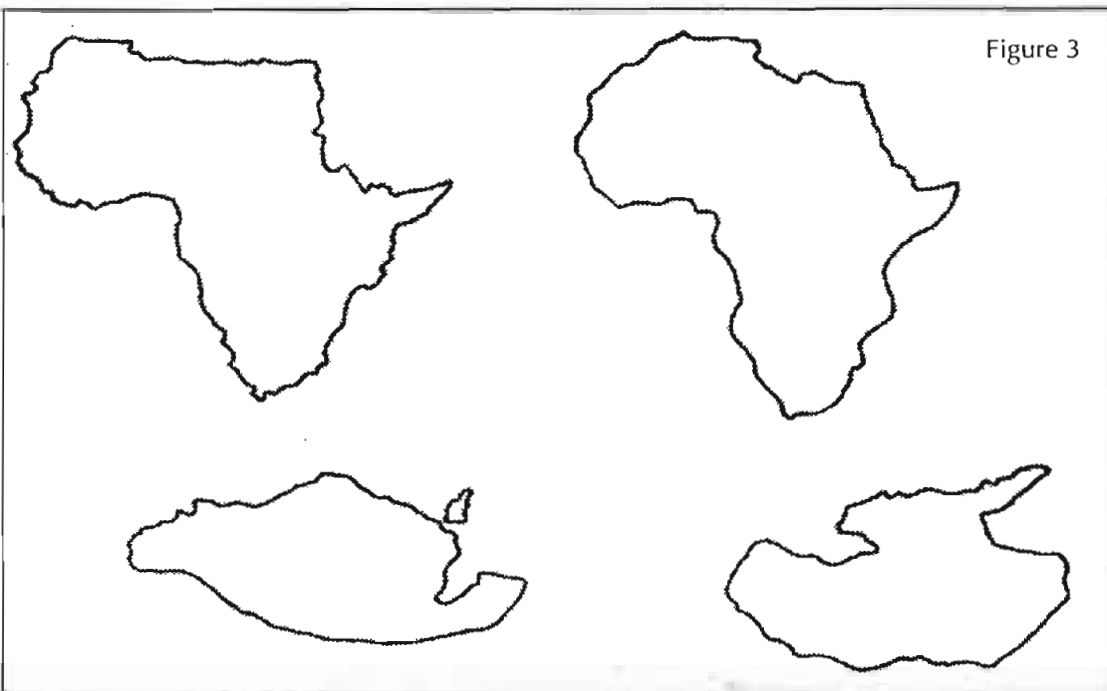


Figure 3

# NEXUS

THE PERFECT GIFT FOR SOMEONE WHO HAS EVERYTHING

£15.00 for a 1 year (six issues) subscription — Tel: 01342 322854 or Fax: 01342 324574